



Canadian National Conservatory of Music

Grade 5 Theory Sample Paper 1

Co-requisite for Grade 5 Practical Examinations

Candidate Number

Time: 1½ Hours

Please write your answers **In Pencil** in the space provided.

1. (15 marks) Write the following scales:

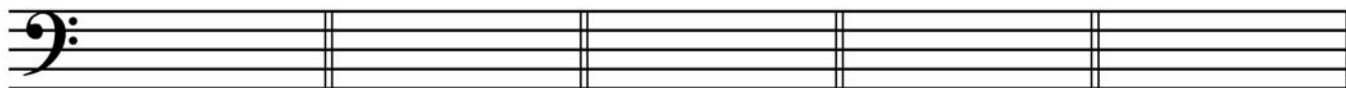
- a)
- B flat Major
 - Use the G clef
 - Use accidentals ONLY
 - Use quarter notes
 - Ascending and descending
 - Mark the semitones with a slur

- b)
- E Major
 - Use the F clef
 - Use a key signature
 - Use eighth notes
 - Ascending only
 - Mark the Tonic, Subdominant and Dominant notes with Roman Numerals

- c)
- Relative minor of D Major, harmonic form
 - Use a bass clef
 - Use accidentals ONLY
 - Use half notes
 - Descending only
 - Mark the interval of a tone plus a semitone with a square bracket

- d)
- C minor, natural form
 - Use a bass clef
 - Use a key signature
 - Use whole notes
 - Ascending and descending
 - Mark the semitones with a slur
 - Label the Tonic(T), Subdominant(SD) and Dominant(D) notes

2. (10 marks) Write the following triads. Use key signatures. Add any necessary accidentals.



Dominant of
G minor

Tonic of
A^b Major

Subdominant of
D Major

Tonic of
E minor

Dominant of
C minor

3. (5 marks) Identify the following as chromatic semitones(CS), diatonic semitones(DS), or whole tones(WT).



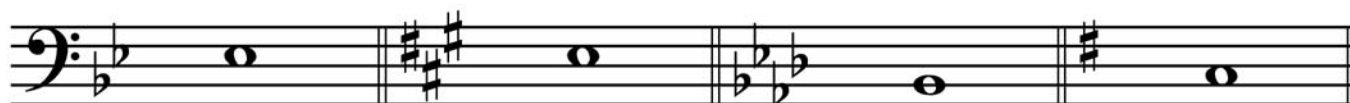
Name: _____

4. (6 marks) Identify the following intervals.



Name: _____

5. (6 marks) Write the following intervals above the given note.



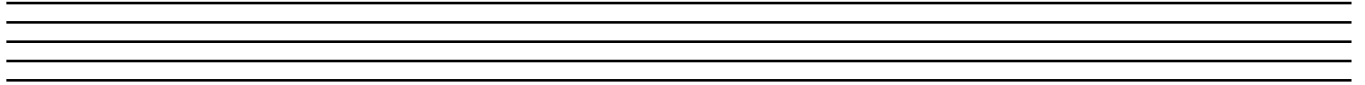
harmonic
perfect 4

melodic
minor 2

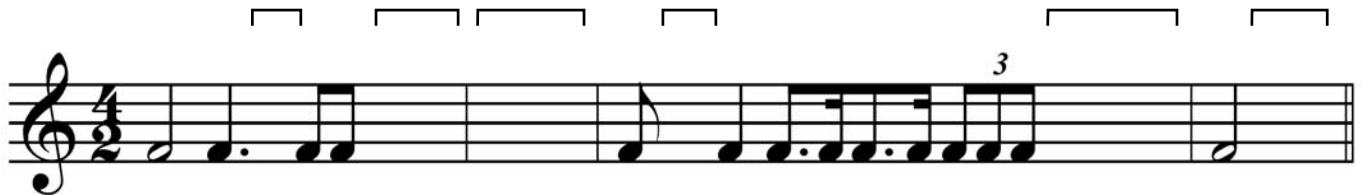
melodic
minor 6

harmonic
major 3

6. (5 marks) Rewrite the following rhythm, beam correctly in $\frac{2}{4}$ time.



7. (6 marks) Add rests below the bracket to complete the following measures.



8. (4 marks) Add the correct time signatures to the following rhythms.



9. (10 marks) Complete the following by adding a two-measure answer.
Mark the solfège labels above the melody and the accents (S W M W) below the melody.
Name the key.

Solfège:



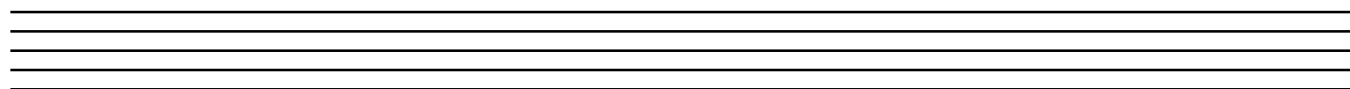
Accents:

Key: _____

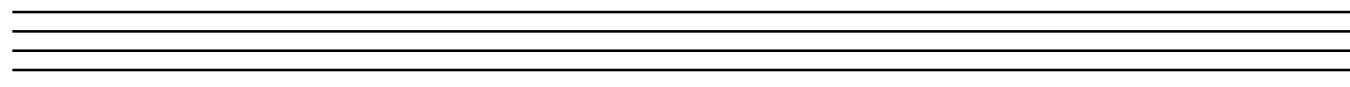
10. (10 marks) Transpose the following melody down one octave in the treble clef. Name the key.



Key: _____



11. (6 marks) Circle at least five errors in the following passage and rewrite it correctly on the staff below.



Key: _____

12. (5 marks) By drawing a line, match the term in column A with the corresponding definition in column B.

A	B
<i>Ritenuato</i>	slowly
<i>Largo</i>	slower than Adagio
<i>Marcato</i>	playfully; cheerfully
<i>Lento</i>	suddenly slower
<i>Giocoso</i>	well marked, accented

13. (12 marks) Analyze the following score by completing the following:

i) Name the key. _____

ii) Define the term at **A**: _____

iii) Name the chords at:

	Root	Major / minor
B	_____	_____
C	_____	_____

iv) Name the intervals at:

	Interval	Melodic / Harmonic
D	_____	_____
E	_____	_____
F	_____	_____
G	_____	_____

v) Add the time signature directly on the score.

vi) Name and define the sign at **I** : _____

vii) Circle and label a diatonic semitone (DS) directly on the score.

viii) Define the term at **K**. _____

Country Dance

K.WoO 15, Number 1

Ludwig van Beethoven
(1770-1827)**Allegretto**

mf *sf* *sf* A G

E D K
Fine

p B

f D.C. al Fine F



Canadian National Conservatory of Music

Grade 5 Theory Sample Paper 2

Co-requisite for Grade 5 Practical Examinations

Candidate Number

Time: 1½ Hours

Please write your answers **In Pencil** in the space provided.

1. (16 marks) Write the following scales:

- a)
- F Major
 - Use the F clef
 - Use sixteenth notes in pairs
 - Use accidentals ONLY
 - Ascending and descending
 - Mark the semitones with slurs
 - Mark the tonic and dominant notes with Roman Numerals

- b)
- E minor melodic
 - Use the bass clef
 - Use quarter notes
 - Use a key signature
 - Descending only
 - Mark the semitones with slurs

- c)
- C minor harmonic
 - Use the treble clef
 - Use whole notes
 - Ascending and descending
 - Use a key signature
 - Mark the interval of a tone plus semitone with a square bracket
 - Mark the semitones with slurs

- d)
- E Major
 - Use the G clef
 - Use dotted half notes
 - Ascending only
 - Use accidentals ONLY
 - Mark the tonic and dominant notes with Roman Numerals
 - Mark the semitones with slurs

Grade 5 Theory Sample Paper 2

2. (12 marks) Transpose the following melody **DOWN** one octave.

Name the key.

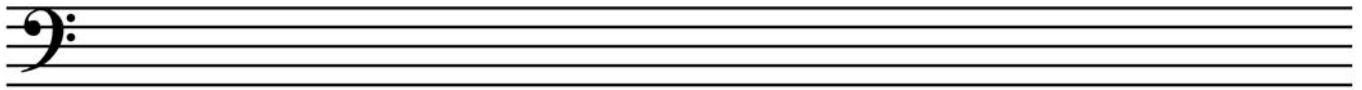
Mark the strong (S), medium (M) and weak (W) accents above the melody.

Add the time signature

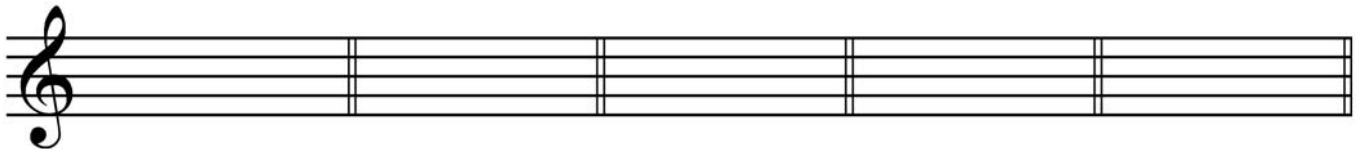
Accents:



Key: _____



3. (10 marks) Write the following triads in root position for the given keys. Use a key signature.



I
A Major

V
G minor

IV
F Major

V
D Major

i
F minor

4. (5 marks) Write the following harmonic intervals above the given notes:



Major 7th

Perfect 4th

Perfect 5th

Major 3rd

minor 6th

Grade 5 Theory Sample Paper 2

5. (3 marks) Add the correct time signature to the following rhythms:



6. (9 marks) Complete the following melody by adding a two-measure answer.

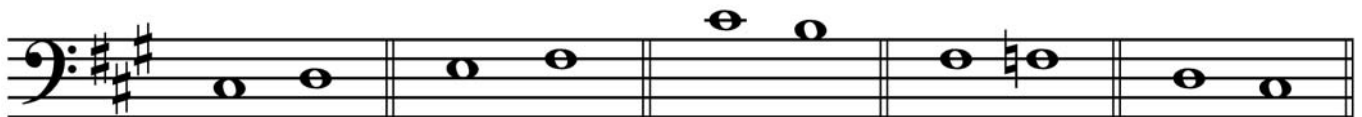
- Above the melody show strong (S), medium (M) and weak (W) accents
- Below the melody add the *solfège* names (doh, re, mi, etc.)
- Name the key. _____

Accents:



Solfège:

7. (5 marks) Identify the following as a whole tone (WT), chromatic semitone (CS), or diatonic semitone (DS).



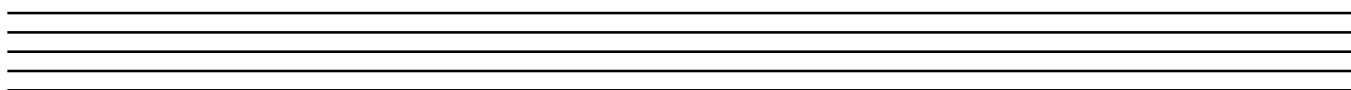
Name: _____

Grade 5 Theory Sample Paper 2

8. (10 marks) Circle at least **nine** errors in the following passage.
Correctly rewrite the passage on the staff provided below.
Name the key.



Key: _____



9. (3 marks) Identify the major and minor keys for the following key signatures:



Major: _____

minor: _____

Grade 5 Theory Sample Paper 2

10. (8 marks) Draw a line from the term/sign in column **A** to the corresponding definition in column **B**.
(There are extra definitions)

<u>A</u>	<u>B</u>
<i>Tenuto</i>	loud then immediately soft
	repeat the music between the signs
<i>Cantabile</i>	majestically
	hold or sustain for its full value; give a slight emphasis
<i>Maestoso</i>	in a singing style
	gradually becoming louder
<i>Accelerando</i>	the end
	hold for the combined value of given notes
<i>Moderato</i>	gradually becoming faster
	at a moderate speed
<i>Fortepiano</i>	emphasize the note; play note louder than the given dynamic
<i>Tie</i>	

Grade 5 Theory Sample Paper 2

11. (19 marks) Analyze the following musical excerpt by answering the following questions:

i) Name the composer: _____

ii) Identify the intervals at the following markers:

A _____

B _____

C _____

D _____

E _____

F _____

iii) Identify the triads, including major or minor, at the following markers:

G _____

H _____

iv) Define the terms at:

I _____

J _____

v) Circle and label directly on the score a descending tetrachord (**K**).

vi) Find and label directly on the score the following:

- *tenuto* sign (**ten**)
- chromatic semitone (**CS**)
- *fermata* sign (**fer**)
- 3 - note slur (**SL**)
- quarter rest (**QR**)
- rest for a whole measure of silence (**R**)
- harmonic interval (**HI**)

Nocturne: Lazy Evening

David Duke

David Duke

The image displays a musical score for the piece 'The Wind' by David Duke. The score is written for piano and guitar. The piano part is in 6/8 time, starting with a tempo marking of 'Adagio' and a metronome indication of 46-52. The guitar part is in 6/8 time, starting with a tempo marking of 'a tempo'. The score is divided into three systems, each with a key signature of one flat (B-flat major or D minor). The first system (measures 1-4) features a piano introduction with a 'p' dynamic and a guitar entry with a 'G' marking. The second system (measures 5-8) includes a piano section with a 'p' dynamic and a guitar section with a 'H' marking. The third system (measures 9-12) features a piano section with a 'p' dynamic and a guitar section with a 'C' marking. The score includes various musical notations such as notes, rests, and accidentals, as well as dynamic markings like 'p' (piano), 'pp' (pianissimo), and 'mp' (mezzo-piano). The guitar part includes a 'G' marking, which likely refers to a specific guitar technique or effect. The piano part includes a 'con ped. ad lib.' marking, indicating a pedal point or a free pedal. The score is presented in a clear, professional layout with a white background and black musical notation.

1
Adagio $\text{♩} = 46 - 52$

2 *a tempo* 3

p *pp* *rit.* *mp*

con ped. ad lib.

J

5

E

p *pp* *mp*

A

B

H

F

10

5 3 3 1 3

C

p

D



Canadian National Conservatory of Music

Grade 5 Theory Sample Paper 3

Co-requisite for Grade 5 Practical Examinations

Candidate Number

Time: 1½ Hours

Please write your answers **In Pencil** in the space provided.

1. (10 marks) Transpose the following melody **UP** one octave in the G clef.

Name the key.

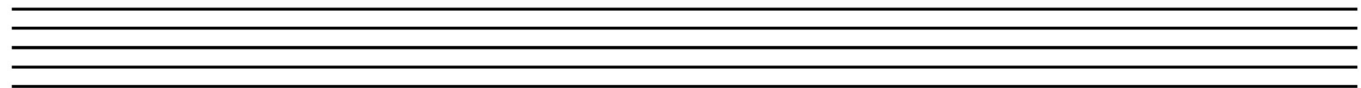
Mark the strong (S), medium (M) and weak (W) accents above the given melody.

Add the time signature under the bracket.

Accents:

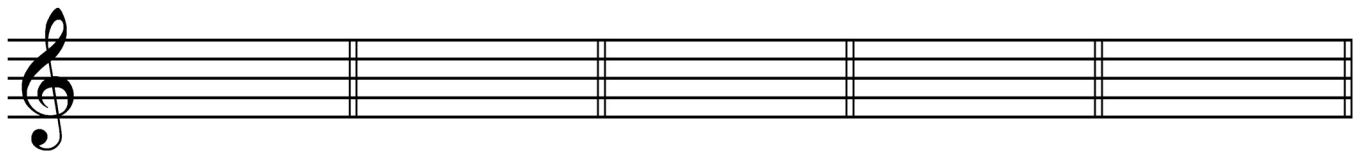


Key: _____



2. (10 marks) Write the following triads in root position for the given keys.

Use the correct key signature. Add any necessary accidentals.



iv
E minor

V
A^b Major

IV
B^b Major

iv
A minor

V
C minor

3. (6 marks) Write the following melodic intervals above the given notes:



Perfect 5th

Major 2nd

minor 6th

Perfect 4th

minor 3rd

4. (15 marks) Write the following scales:

- a)
- A flat Major in the G clef
 - Use a key signature
 - Ascending and descending
 - Use eighth notes paired
 - Mark the tonic and dominant notes with Roman Numerals
 - Mark the semitones with slurs

Four horizontal lines for writing the scale for part a).

- b)
- B minor melodic in the bass clef
 - Use accidentals ONLY
 - Ascending and descending
 - Use whole notes
 - Mark the semitones with slurs

Four horizontal lines for writing the scale for part b).

- c)
- G Major in the F clef
 - Use accidentals ONLY
 - Descending only
 - Use quarter notes
 - Mark the semitones with a slur

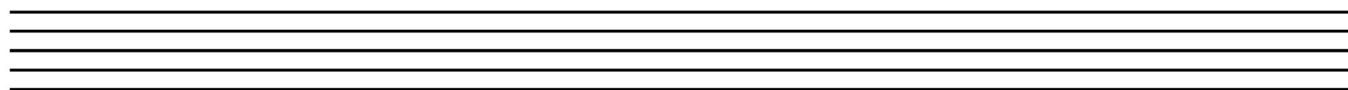
Four horizontal lines for writing the scale for part c).

- d)
- C sharp minor harmonic in the treble clef
 - Ascending and descending
 - Use a key signature
 - Use whole notes
 - Mark the semitones with slurs
 - Mark the tone plus a semitone with a square bracket

Four horizontal lines for writing the scale for part d).

5. (3 marks) Re-write the following correctly, grouping beats according to the given time signature. Use the blank staff provided below. Mark the accents.

Accents:



6. (9 marks) Complete the following melody by adding a two-measure answer.

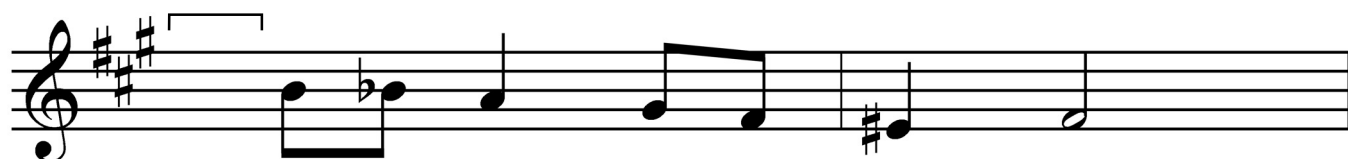
- Above the melody show strong (S), medium (M) and weak (W) accents
- Below the melody add the *solfège* names (doh, re, mi, etc.)
- Name the key. _____

Accents:



Solfège:

7. (4 marks) In the following excerpt, circle and label ONE each of the following: whole tone (WT), chromatic semitone (CS), or diatonic semitone (DS). Add the time signature below the bracket.



--

-

Key: _____

-

10. (7 marks) Draw a line from the term/sign in column **A** to the **opposite** definition in column **B**.
(There are extra definitions)

A

Crescendo

Adagio

Tenuto

Fortissimo

Accelerando

Maestoso

Mano Sinistra

B

accent

very soft

playfully

gradually becoming softer

short, detached

gradually becoming slower

very fast

little by little

right hand

11. (15 marks) Analyze the following musical excerpt by answering the following questions:

i) Name the key: _____

ii) Add the time signature directly on the score.

iii) Identify the intervals at the following markers:

A _____

B _____

C _____

D _____

E _____

F _____

iv) Identify the triads, including major or minor, at the following markers:

G _____

H _____

v) Define the terms at:

I _____

J _____

vi) Write the Italian term for marker **K**: _____

vii) Circle directly on the score and mark with the assigned number each of the following:

1. *decrescendo*
2. diatonic semitone
3. ascending pattern of notes moving by step
4. register change

Doodlin' Around

Debra Wanless

K Lively ♩ = 120

mf

A

B

5

f

C

D

E

9

mf

F

13

f

G

17

H

senza rit.

I

J

ff



Canadian National Conservatory of Music

Grade 5 Theory Sample Paper 4

Co-requisite for Grade 5 Practical Examinations

Candidate Number

Time: 1½ Hours

Please write your answers **In Pencil** in the space provided.

1. (15 marks) Write the following scales:

- a)
- E Major
 - Use the treble clef
 - Use eighth notes
 - Use the correct key signature
 - Ascending and descending
 - Mark the semitones with slurs
 - Mark the tonic and dominant notes with Roman Numerals

- b)
- G minor melodic
 - Use the G clef
 - Use eighth notes paired
 - Use accidentals ONLY
 - Ascending and descending
 - Mark the semitones with slurs

- c)
- F sharp minor harmonic
 - Use the F clef
 - Use whole notes
 - Ascending and descending
 - Use the correct key signature
 - Mark the interval of a tone plus semitone with a square bracket
 - Mark the semitones with slurs

- d)
- B flat Major
 - Use the bass clef
 - Use dotted half notes
 - Descending only
 - Use the correct key signature
 - Mark the tonic and subdominant notes with Roman Numerals
 - Mark the semitones with slurs

2. (10 marks) Transpose the following melody **UP** one octave into the G clef.

Name the key.

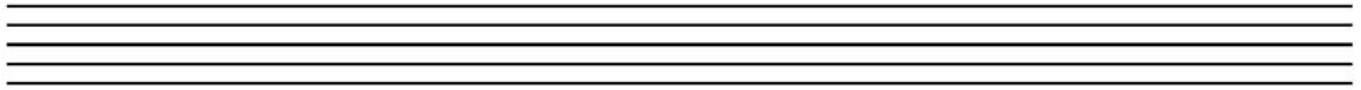
Mark the strong (S), medium (M) and weak (W) accents above the given melody.

Add the time signature under the bracket

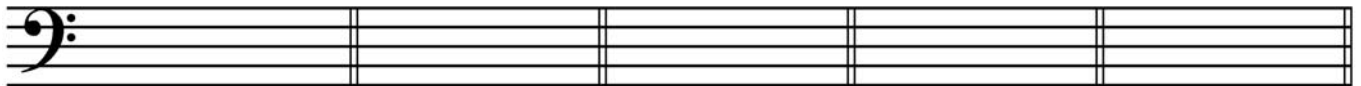
Accents:



Key: _____



3. (10 marks) Write the following triads in root position for the given keys. Use accidentals ONLY.



IV
Eb Major

V
B minor

IV
A Major

V
Bb Major

i
F# minor

4. (5 marks) Write the following harmonic intervals above the given notes:



Major 7th

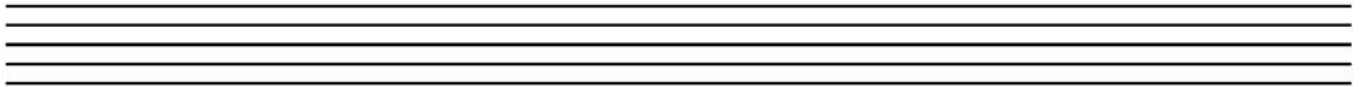
Perfect 4th

Perfect 5th

Perfect Unison

minor 6th

5. (3 marks) Re-write the following correctly, grouping beats according to the given time signature. Use the blank staff provided below.



6. (9 marks) Complete the following melody by adding a two-measure answer.

- Above the melody show strong (S), medium (M) and weak (W) accents
- Below the melody add the *solfège* names (doh, re, mi, etc.)
- Name the key. _____

Accents:



Solfège:

7. (3 marks) In the following excerpt, circle and label ONE each of the following: whole tone (WT), chromatic semitone (CS), or diatonic semitone (DS).



--

-

Key: _____

-

10. (8 marks) Draw a line from the term/sign in column **A** to the corresponding definition in column **B**.
(There are extra definitions)

A*Larghetto**Adagio**Poco a poco**a tempo**Ritenuto**Marcato**Giocoso**Dal Segno***B**

return to the original speed

playfully, cheerfully

repeat from the sign

hold or sustain for its full value;
give a slight emphasis

rather slow and broadly

little by little

very slowly, slower than Andante

well marked, accented

gradually becoming slower

suddenly slower

emphasize the note; play note
louder than the given dynamic

11. (15 marks) Analyze the following musical excerpt by answering the following questions:

i) Add the time signature to the score.

ii) Identify the intervals at the following markers:

A _____

B _____

C _____

D _____

E _____

F _____

iii) Identify the triads, including major or minor, at the following markers:

G _____

H _____

iv) Define the terms at:

I _____

J _____

v) Circle directly on the score and mark with a **K** a term for 'gradually becoming slower'.

vi) Circle directly on the score and mark with the assigned number each of the following:

1. *crescendo* sign
2. diatonic semitone
3. *fermata* sign
4. tie
5. quarter rest
6. legato marking
7. harmonic interval

Sentimental Sam

Rémi Bouchard

Moderato $\text{♩} = 88 - 96$ I

The musical score for "Sentimental Sam" is written for piano. It begins with a tempo marking of Moderato and a metronome indication of 88-96 beats per minute. The key signature is one sharp (F#), and the time signature is 2/4. The score is divided into four systems, each with a key signature change box (A, B, C, D, E, F, G, H, J). The dynamics range from *mf* (mezzo-forte) to *p* (piano). The score includes various articulations such as slurs, accents, and ped. simile. The melodic line features fingerings and slurs. The accompaniment includes chords and single notes. The score ends with a final key signature change box (J).